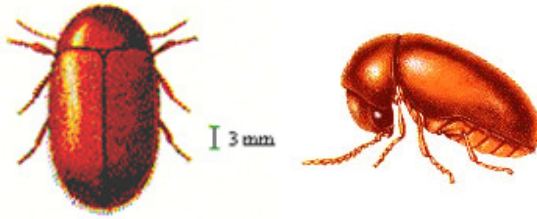


Cigarette Beetle *Lasioderma serricorne*



Adults reddish-brown with head tucked down.
Attack: Tobacco, dried plant material & books

Monitoring pinpoints infestation so you can save time and money in your IPM program

Serricap

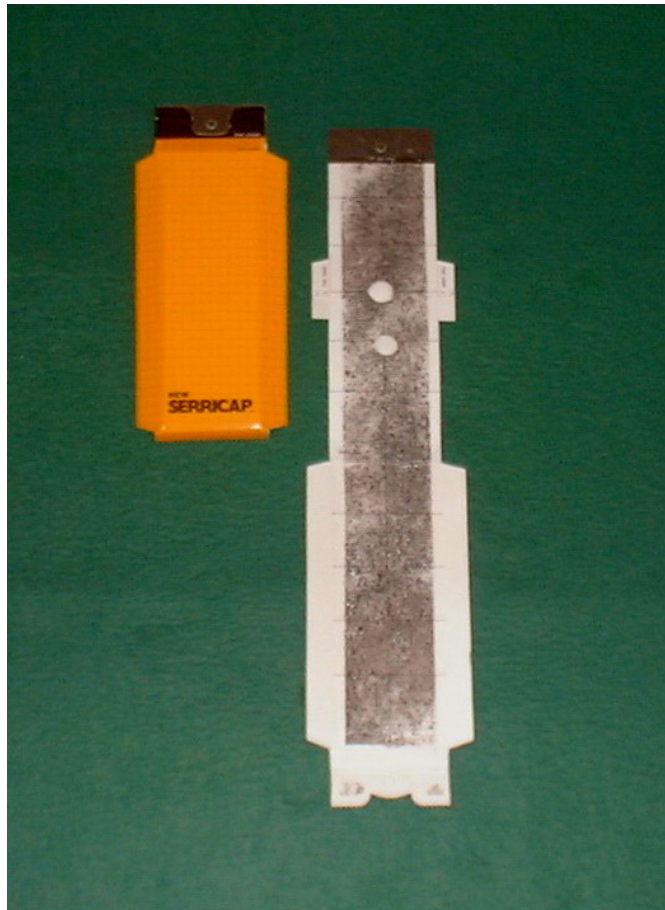
- Most efficient cigarette beetle trap
- More pheromone than any other trap
- Improved Food Attractant Lure
- Constant release for 14 weeks

Serricap Trap & Lures

Monitoring Kit: Serricap Trap with Pheromone lure & Food Attractant lure. Captures Males.

Monitoring: Recommended with 10 meters between traps. Renew traps every 14 weeks.

Adult beetle activity significant when outside temperatures are $> 20^{\circ}\text{C}$, March-October in Temperate Zones



ChemTica Internacional, S. A.
Apdo. 159-2150, San Jose, Costa Rica
info@mail.pheroshop.com www.chemtica.com